

MARU

Interiors & Houses, Lifestyle Design

FOCUS

Gagopa the House

DESIGNERS

Ribbon Pilates Magok Studio
PRAISE FOOTBALL CLUB, Madera Cafe

HOME & HOUSES

tri: house, Gwanggyo 10-4-3
loft house The black
Nook Residence, Blue and Glue

FURNITURE

Blue Print

172





M
madera
cafe

PUMPKIN
SOUP + TOAST
\$38

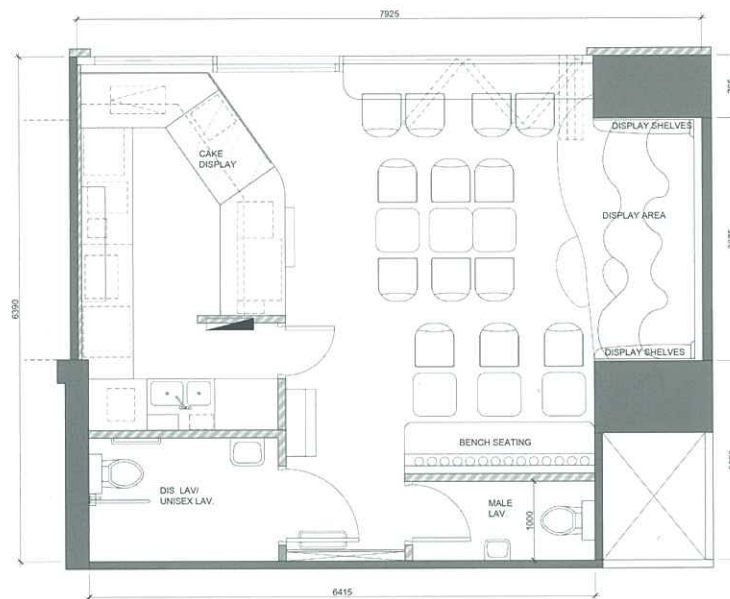
click here

Madera Cafe

Stefano Tordiglione Design Ltd

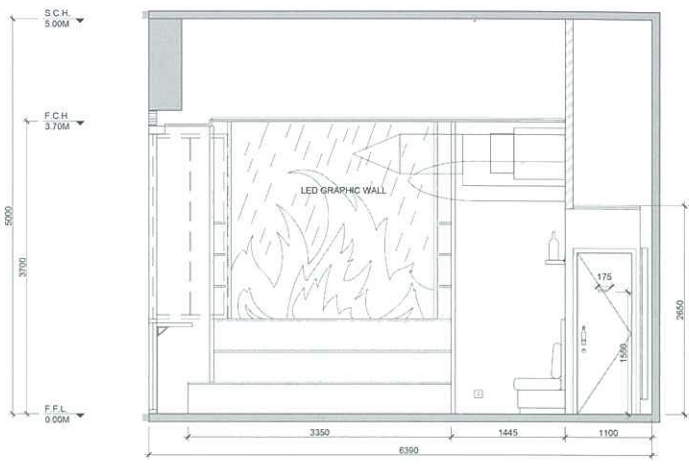
디자인 스테파노 토르딜리오네 디자인 스테파노 토르딜리오네, 케네스 탐 발주처 힙 싱 홍 위치 홍콩 사우케이완 면적 46m² 바닥 우드 세라믹 타일, 흑색점판암 벽 엘이디 네온, 스텐코 페인트, 흑색점판암, 블랙 미러, 블랙 페인트 글라스 천장 라탄, 그레이 페인트 가구 라탄 사진 케네스 탐

Design Stefano Tordiglione Design Ltd, Stefano Tordiglione, Kenneth Tam Client Hip Shing Hong (Holdings) Co Ltd Location Shau Kei Wan, Hong Kong Area 46m² Floor Wood ceramic tile, Black slate Wall LED-neon light, Stucco Paint, Black slate, Black mirror, Back painted glass Ceiling Rattan, Grey paint ceiling Feature Furniture Rattan Photo Kenneth Tam

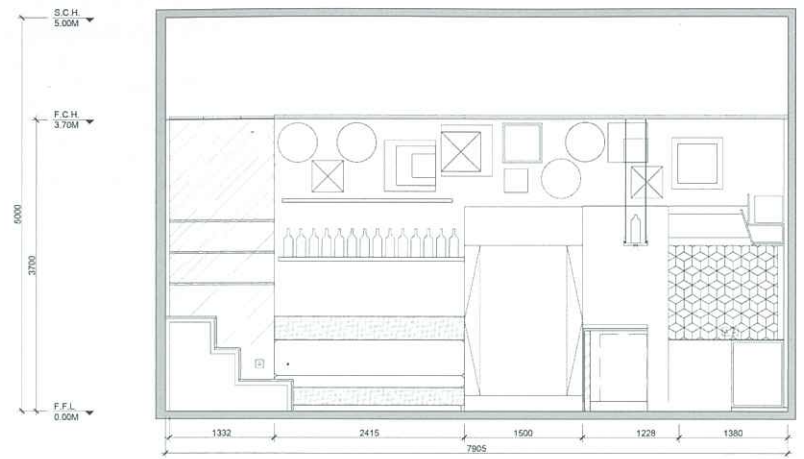


Floor Plan





Elevation A



Elevation B



마데라 카페

움직이는 네온 피쳐월은 비에 꺼지기 전에 점점 자라나는 불을 표현하고 있다. 사각형과 삼각형의 등나무 조형물이 천장에 매달려 도시의 스카이라인을 표현하는데, 이는 상업에서 부동산업으로 업종을 바꾼 풍 가족 회사의 역사를 말하는 듯 하다.

접이식 창문으로 이루어진 파사드는 반(半)야외 좌석을 제공하는데, 흙색의 내부 디자인과 어두운 색의 가구가 현대적인 느낌을 자아낸다. 내부 디자인은 주로 목재로 구성되어, 밝고, 깔끔하며, 자연스러운 느낌을 구성하였고, 이는 "목재"라는 뜻의 스페인어 "마데라"라는 카페 이름의 유래이다. 좌석은 낮은 테이블 및 피쳐월 바로 아래의 편안하고 여유로운 계단식 좌석으로 이루어져 있으며, 방문객들은 레드백 커피, 홍콩 맥주 등 건강하고, 현지에서 지속 가능한 방식으로 생산된 식 음료를 즐길 수 있다. **M**

Run by The Hip Shing Hong (Holdings) Company, Madera Cafe is a nostalgic look back in time. Establishing Yee Tak Sesame Factory in 1920s, its founder Fong Shu Chuen traded in sesame and cinnamon. This period of development is reminiscent by the bottles and jars filled with black/white sesame seeds and sticks of cinnamon, which populate on the wall and the shelves of the cafe, and they form the handles on the doors of the bathrooms. The dark rattan chairs evoke fond memories of the Fong family's early beginnings as rattan traders when they established the business.

A moving neon feature wall faces the kitchen depicting a fire that grows bigger and bigger before being dissipated by lit shards of rain. The sesame factory was tragically destroyed by fire, though this event also provided an opportunity for the Fong family - the rebuilding, it turned out, was a golden opportunity to gain experience in property development, and in 1948 the Fongs launched property development company Hip Shing Hong. Rectangular and triangle-shaped boxes made from rattan form a hanging display on the ceiling depicting a city skyline refers exactly to this transition from trading into property.

The facade of folding windows offers semi alfresco seating while the earthy-toned interiors and dark-hued furniture lend it a contemporary feel. The interiors have been created mainly in wood for a light, clean and natural feel and in a nod to the cafe's name - madera is the Spanish for wood. Seating options include low tables and comfortable, relaxing step seating beneath the feature wall, and visitors can enjoy healthy, locally sourced, sustainably produced food and drinks such as Redback coffee, and beers from Hong Kong's MOONZEN brewery.

The designer has also incorporated his own artworks into the design. An artist in his former life, Stefano Tordiglione's sensual black and white paintings depicts masculinity, Flandrin, and femininity, Ang. Both are featured in the male and female washrooms respectively.





